



2019

# IMPACT REPORT



Family & Children's Place

# a message

## FROM THE PRESIDENT

Since 1883, Family & Children's Place has been the community leader in protecting and healing children and families. This mission continued in Fiscal Year 2019 as we worked harder than ever to realize our vision of happy, healthy children and families...free from abuse.

Whether through our HANDS program for new and expectant parents or our programs in local elementary and middle schools, we stood firm to **prevent** abuse and neglect by building stronger families and more resilient children.

Our child advocacy centers in Louisville and Southern Indiana continued to **stop** abuse and neglect in coordination with child protection staff, medical professionals, and the criminal justice system. We have been careful and compassionate advocates for children through every step of the process.

For children whose worlds were turned upside down by traumatic experiences like abuse and neglect, we stepped in to help them **recover**. Our professional counselors have provided specialized treatment to ensure brighter futures not only for children, but for their families, as well.

We are so honored to do this work. Even more, we hope *you* are inspired by the work *you* have made possible.

Our journey will continue as long as children and families need us. Thank you for paving the road for us as we move into the coming year...together.

*Pam Dawall*







## EXECUTIVE LEADERSHIP

### PRESIDENT/CHIEF EXECUTIVE OFFICER

Pam Darnall

### CHIEF OPERATING OFFICER

Jackie Richardson

### SENIOR VICE PRESIDENT OF EXTERNAL AFFAIRS

Leah Walker

### VICE PRESIDENT OF PROGRAMS

Dawn Burke

### VICE PRESIDENT OF EARLY CHILDHOOD SERVICES

Vaughn M. Nebbitt

### VICE PRESIDENT OF FINANCE

Adam Faris

## BOARD OF DIRECTORS

Family & Children's Place is governed by a volunteer Board of Directors comprising business, healthcare, educational, and community leaders throughout Louisville and Southern Indiana, who lend their expertise to the agency's business and development operations.

### CHAIR

**Terrence Spence**

Louisville Water Co.

**Tiffany Koller**

LG&E and KU Services

### VICE CHAIR

**Harriet L. Lair**

Fifth Third Bank

**Kevin Meriwether**

Humana

**Angie Morrison**

ARGI Financial Group

### SECRETARY/ TREASURER

**Kim Friend**

MCM CPAs & Advisors

**Adrianne Morse**

Community Volunteer

**Shellie Benovitz**

Community Volunteer

**Audra Rankin**

Johns Hopkins University

**Fred Cowan**

Jefferson County Circuit Court  
(Retired)

**Shana Riggs**

Brown-Forman Corporation

**Mary Eaves**

Dentons Bingham Greenebaum

**Tony Schwallie**

Republic Bank

**Bill Ehrig**

YUM! Brands (Retired)

**Dallas Selvy**

Community Volunteer

**Rich Garner**

Booz Allen Hamilton

### COUNCIL OF ADVISORS

**Tim Huval**

Humana

**Doug Haynes**

Fernandez Haynes & Kohn



# *strategic plan*

## *mission*

We protect and heal children and families.

## *vision*

Happy, healthy children and families...free from abuse.

## *values*

### **EMPOWERMENT**

We empower the people who use our services and position them to thrive. Our employees are our most valued asset and have what they need to succeed.

### **INTEGRITY**

Our clients and the community trust us.

### **EXCELLENCE**

Our highly-trained employees deliver superior, proven, and effective services.

### **DIVERSITY**

We celebrate differences and welcome everyone. We support and encourage diversity, equity, and inclusion in our work.

### **ACCOUNTABILITY**

We are excellent stewards of precious resources and are accountable to our clients, employees, board, and community.

# *focus areas*

## **IMPACT**

We build stronger individuals and families, helping them reach their fullest potential. We offer prevention, intervention, and restoration services in Louisville and Southern Indiana. Our services use proven and effective approaches to minimize trauma in all its forms. Our mission-driven employees provide the highest quality of service while managing our constraints effectively.

## **SUSTAINABILITY**

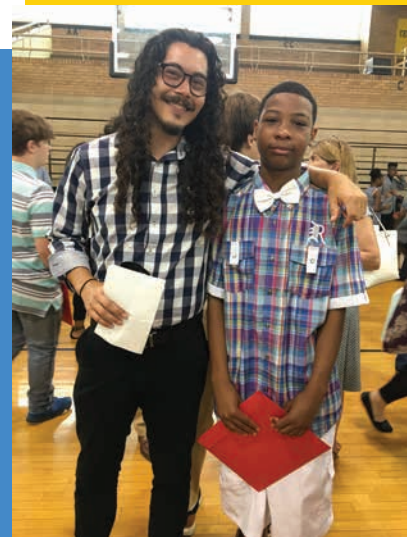
We secure the resources needed to deliver and sustain our services. We achieve fundraising targets and proactively influence public policy.

## **AWARENESS**

We lead efforts to inform our community about the prevalence of child abuse and family violence and how we protect and heal families. The community and key external partners are informed about our impact on children and families. We clearly communicate with our board and employees. We leverage our reputation of excellence to collaborate with broad stakeholders

## **DIVERSITY**

Our culture has been shaped by thought leadership in equity, diversity, and inclusion. Our leadership and employees reflect the demographics of the community we serve. Our high-performing workforce enables us to attract and retain employees from underrepresented backgrounds. We include the community we serve in decision making and service improvement.



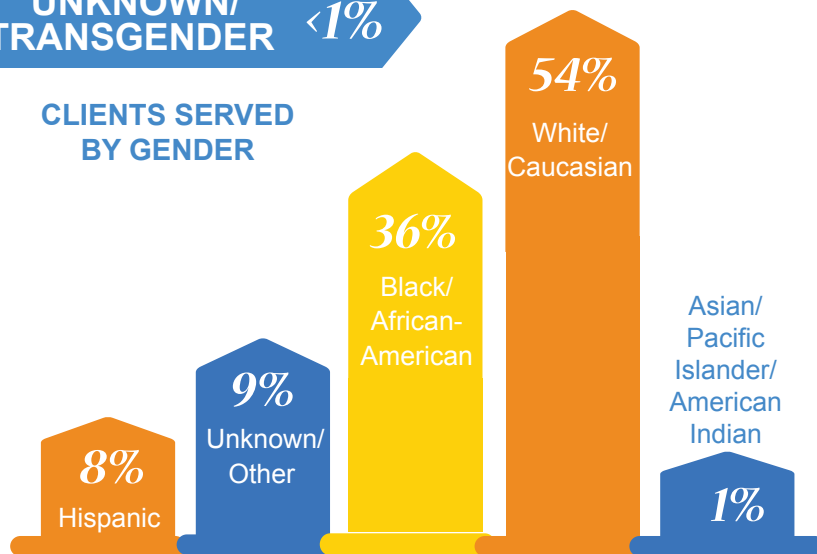
# statistics

MALE 31%

69% FEMALE

UNKNOWN/  
TRANSGENDER <1%

CLIENTS SERVED  
BY GENDER



CLIENTS SERVED BY RACE



**\$27,708**

AVERAGE INCOME  
OF CLIENTS



CHILD'S AVERAGE AGE



COUNTIES SERVED

## COUNTIES IN INDIANA

Primary counties are  
Clark, Floyd, Harrison,  
Scott, Washington



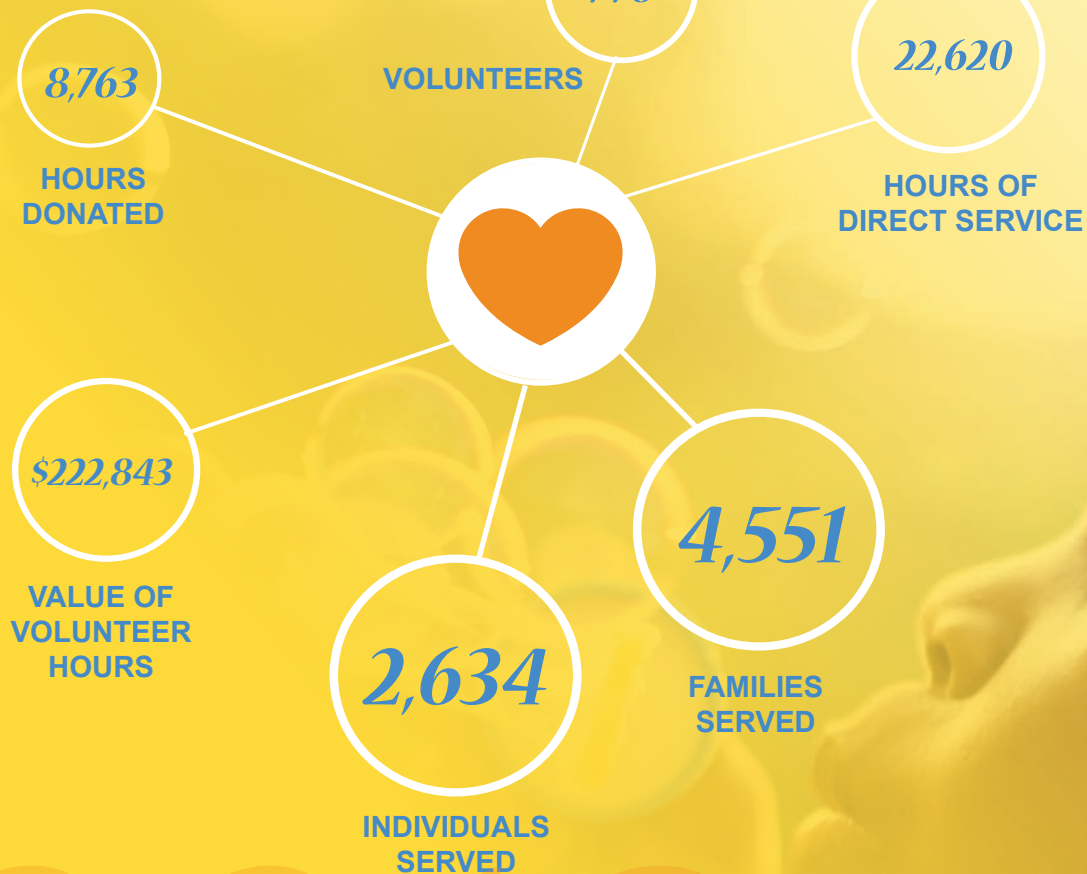
9

## COUNTIES IN KENTUCKY

Primary counties  
are Bullitt, Henry,  
Jefferson, Oldham,  
Shelby, Spencer, Trimble



24



2019



# statement of

## REVENUE AND EXPENSES

# 2019

### EXPENSES BY PROGRAM

		% of Total
HANDS	\$1,395,189	26.4%
Child & Family Services	\$1,352,196	25.6%
Child Advocacy Centers	\$920,791	17.4%
Family & School Services	\$434,068	8.2%
PAL Coalition	\$158,724	3.0%
<b>Shared Services</b>		
Management & General	\$571,195	10.8%
Fundraising	\$449,011	8.5%
<b>Total Expenses</b>	<b>\$5,281,174</b>	<b>100%</b>

### EXPENSES BY CATEGORY

		% of Total
Salaries & Benefits	\$3,796,276	71.9%
Professional Fees	\$327,346	6.2%
Occupancy Expenses	\$261,782	5.0%
Depreciation & Amortization	\$259,327	4.9%
Other Operating Expenses	\$205,651	3.9%
Interest Expenses	\$112,015	2.1%
Telecommunications	\$74,487	1.4%
Staff Training Expenses	\$63,797	1.2%
Travel Expenses	\$63,656	1.2%
Office Supplies	\$55,919	1.1%
Public Relations	\$31,130	0.6%
Membership & Dues	\$14,492	0.3%
Printing Expenses	\$13,015	0.2%
Postage	\$2,281	0.0%
<b>Total Expenses</b>	<b>\$5,281,174</b>	<b>100%</b>

### PUBLIC SUPPORT AND REVENUE

		% of Total
Program Service Fees	\$1,886,240	36.4%
Private Contributions	\$1,167,803	22.5%
Government Grants & Contracts	\$1,144,269	22.1%
Metro United Way	\$719,365	13.9%
Other	\$164,155	3.2%
Investment Returns	\$103,293	2.0%
<b>Total Public Support and Revenue</b>	<b>\$5,185,125</b>	<b>100%</b>

**Total Net Ending Assets \$5,397,913**







## CORPORATE & FOUNDATION PARTNERS

### GUARDIANS \$50K+

Brown-Forman Corporation  
EAJA Investments, LLC  
The Gheens Foundation, Inc.  
Kosair Charities  
Paul Ogle Foundation, Inc.

### HEROS \$25K-\$49,999

Ar-Hale Family Foundation  
Jewish Heritage Fund for Excellence

### CHAMPIONS \$10K-\$24,999

Delta Dental Plan of Kentucky  
Floyd Memorial Foundation, Inc.  
The Hazel and Walter T. Bales Foundation, Inc.  
Horseshoe Foundation of Floyd County  
Rotary Fund of Louisville  
WHAS Crusade for Children

### ADVOCATES \$5K-\$9,999

Algood Food Co.  
CAF Philanthropy Services  
Family Heritage Fund  
Fred B. and Opal S. Woosley Foundation  
Genscape, Inc.  
Kentucky Children's Home Corporation  
Mildred V. Horne Foundation  
The Cralle Foundation, Inc.  
V.V. Cooke Foundation

### STEWARDS \$1K-\$4,999

Anthem Medicaid, Kentucky Operations  
Capricorn Foundation Charitable Trust  
Centerstone  
First Savings Bank  
Humana Foundation  
Humana Inc.  
Lyndon & Helen M. Schmid Charitable Foundation  
Mariner Wealth Advisors  
Nel S. Morrison Charitable Trust  
Republic Bank & Trust Co.  
Stites & Harbison, PLLC  
Stock Yards Bank & Trust Co.  
Tri-Arrows Aluminum Inc.  
UK Healthcare  
Zoeller Company



## Office Locations

### KENTUCKY

#### Family Service Center

525 Zane Street, Louisville, KY 40203

#### Kosair Charities Child Advocacy Center

1000 South Fifth Street, Louisville, KY 40203

#### Republic Bank Foundation YMCA Office

1720 West Broadway, Louisville, KY 40203

### INDIANA

#### Southern Indiana Office

100 West Court Avenue #102, Jeffersonville, IN 47130

#### Child Advocacy Center

136 East Cottom Aveue, New Albany, IN 47150

### GREAT BEGINNINGS LUNCH & LEARNS:

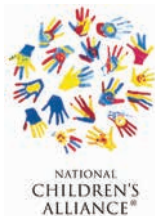
Quarterly, we invite members of the community to an hour-long "lunch and learn" about our work with children and families hurt by abuse and neglect. The tour includes a visit to our world-class Kosair Charities Child Advocacy Center, which provides the Louisville metro area with compassionate, coordinated intervention and investigation of child abuse and neglect through child-friendly, trauma-informed practices. A complimentary lunch is provided. Please visit our website to learn more or sign up.

### REQUEST A SPEAKER:

Please visit our website to request a speaker from Family & Children's Place or any of our programs. We will request you provide as much information as possible, including the name of your group, date and time requested, location, the time allotted for the speaker, special requests, etc.

### VOLUNTEERS:

Family & Children's Place empowers the unique skills of more than 700 volunteers every year. We provide numerous opportunities for both individuals and groups who want to help realize our vision of happy, healthy children and families...free from abuse. Please visit our website to learn more or sign up.



Metro United Way

