

SEE YOUR IMPACT...



Family&Children's Place

2016 ANNUAL REPORT

Message from the President/CEO



Thank you to each of our individual, foundation, corporate and government supporters for helping Family & Children's Place move thousands of children and families from hurting to hope and healing in 2016. We are proud to serve as the leading child abuse prevention and recovery agency in Louisville and Southern Indiana, possible only because of supporters such as you.

Children easily find a special place in our hearts. Perhaps that is why it's so gratifying to know that most children live in stable families with secure homes. They feel safe, protected and are able to learn and grow.

But difficult situations arise in families; situations that can deeply affect – and sometimes do significant harm to – children involved. Our purpose is to help keep children safe, and for those whose safety has been rent, to give them hope and help.

Sadly, every day, children who have experienced the worst kinds of maltreatment – emotional, physical and sexual abuse and neglect – come to Family & Children's Place to begin their journey of healing. This has been the case for more than 130 years, and will continue to be the case thanks to you, because every day you give them a new beginning and a chance for a real future.

Thanks to you, our team served the greatest number of children and families to date – more than 6,000 children and parents built a more stable home environment through our programs.

- In January, Delta Dental became presenting sponsor of our annual CAPER, pledging \$100,000 over four years.
- In March, our second annual Southern Indiana child abuse prevention breakfast drew nearly 200 people, including Indiana Attorney General Greg Zoeller and Floyd County Prosecutor Keith Henderson.
- In April, a huge crowd joined on the lawn of the Big Four Bridge to help kick off Child Abuse Prevention Month, including Kentucky Gov. Matt Bevin and First Lady Glenna Bevin, Kosair Charities, Kentucky and Indiana Attorneys General Andy Beshear and Greg Zoeller, local law enforcement, Kentucky Youth Advocates and a host of other community leaders.
- Also in April, hundreds attended our Louisville child abuse prevention breakfast, including Mrs. Bevin and Atty. Gen. Beshear, to hear the story of abuse survivor Samantha Robertson.
- We also learned in April that the Council on Accreditation (COA), the premier accrediting body for social service agencies in the United States, reaccredited the agency, affirming that Family & Children's Place meets the highest national standards of best practice and delivers the best quality services to child and family clients.
- The accreditation included for the first time our Supervised Visitation Center, which provides a safe place for visits and exchanges for children and families impacted by violence and for children removed from their home due to abuse and/or severe neglect.
- In June, the National Children's Alliance reaccredited the Kosair Charities Child Advocacy Center – deemed by the evaluating agency as one of the seven best in the country – following an extensive application and site review process.
- In August, Family & Children's Place was named Nonprofit of the Year in the Greater Louisville Inc. Inc.credible Awards.
- In October, a PAL Coalition survey showed that in the six years it has worked with students, schools and families in the Park Hill, Algonquin and Old Louisville neighborhoods, the percentage of students reporting they use alcohol, cigarettes and marijuana continues to decrease.
- In October, Kentucky's Cabinet for Health and Family Services licensed the agency as a certified Behavioral Health Services Organization, allowing us to help even more Medicaid recipients with behavioral health issues stemming from substance use, mental health disorder or a co-occurring disorder.
- In November, hundreds turned out for Louisville Mashed, a bourbon-themed event benefiting Family & Children's Place.

"To the staff, the partners, the volunteers and the donors: we must continue to create safety where once there was secrecy. We must continue to illuminate the truth."

— Pam Darnall
President and CEO

- In December, a number of businesses and individuals, including A. Arnold World Class Relocation, Charter Communications, Kindred Healthcare and Crosley Radio, supported our Brighter Holidays program, ensuring 200 children recovering from trauma from violence, abuse and neglect received gifts to provide a Merry Christmas.
- Over the year, we received a number of critical grants and gifts from foundations, including Kosair Charities, Humana, V.V. Cooke, Etscorn, the WHAS Crusade for Children, Woosley, WellCare, the Horseshoe Foundation of Floyd County, Mildred V. Horn, UPS, William E. Barth, YUM, Hazel and Walter T. Bales, Glenda and Gordon Ford, and others.
- And Metro United Way returned as our largest single contributor, helping ensure children and families get the best and most compassionate care possible.

While we have these and many other accomplishments to celebrate, we choose to look forward, to how we can best prepare to meet the ever-growing needs in Louisville and Southern Indiana. We can't do it without you. We need your help so that we can continue to give the children we serve the help and hope they so desperately need and deserve.

Sincerely,

Pam Darnall

Pam Darnall
President and CEO

MORE THAN
130 YEARS
OF SERVICE

With your support, Family & Children's Place will serve more than 6,000 children and families this year



SEE YOUR IMPACT...

This is Eric.

Eric joined the Collaborative Learning After School Program (CLASP) hosted by Family & Children's Place after moving to Louisville. He lives with his father, and his father's girlfriend, both recovering addicts.

Eric's transition to a new school was difficult. He had poor attendance, refused to complete homework and participated in several fights.

Looking past his rebellious behavior, Family & School Services (FSS) staff noticed Eric's curious intellect and a willingness to lead student-led programs. Staff worked with his father to create a plan that allowed Eric to attend more program days, more consistently.

Eric developed as a leader and modeled a positive influence, particularly to younger students in the program. Within six months, Eric was named to the school's Honor Roll.

Eric's father told FSS staff, "I don't recognize this kid anymore. I cannot believe how proud I am of him, and I could not have done it without Family & Children's Place."

Programs and Services

As a child- and family-focused agency, Family & Children's Place integrates compassion into every program and service with the intention to provide every child and family full-life recovery and healing from the trauma of abuse.

We embed compassion into our business model as well. As a partner in Compassion Louisville, it's a part of our DNA.

We ensure no one is left behind or wants, whether it involves children and families we work with, staff, contractors, partners or peers, says Pam Darnall, president and CEO of Family & Children's Place. "We're proud to conduct all our efforts and business in caring and compassionate ways."

Using Compassion Louisville's framework, our "constellations" of compassion include health care and schools, since our work is with children and families

hurt by abuse, as well as students having difficulties in school and society related to violence in the home.

So we use proven, trauma informed methods, along with best in class practices. Our goal is to empower and empower children, along with their families, to confront and then heal and repair the wounds, focusing on the well-being of the whole person.

We adhere to other best practices as well, including transparency, especially as a funded agency that depends on others' support and trust. We strive for inclusion, to reflect the communities we serve. As Mayor Greg Fischer said when he signed the city onto the Compassionate Charter, it's "the right thing and the necessary thing to do to ensure that we take care of all of our citizens."

It's the right thing for Family & Children's Place, and it's what we owe to the children and families who come to us for help.

A REFLECTION ON THE WORK

I was preparing for a session with a client and my mind wandered to voices of children and families walking down our halls and the voice of compassion from the therapist walking with them.

For all of us, I think that is why we do this kind of work, because of the compassion we have deep within ourselves.

"It just feels right," is what we hear from therapists we work with and folks we work with each day. When you strip away the trauma-informed care, the evidenced-based models, the competitive grant and funding market, what is left is that strong compassion we feel to help, to be a part of helping someone improve their life.

The families and children we work with impact us in many ways. Many nights it is hard to get the stories out of our minds when we are home comfortable and safe with loved ones.

We push on because we have a hope backed up by experiences, seeing families pull themselves up and become what they never thought possible: happy, content, valuable, lovable and worthwhile!

We will never know what those few extra minutes with a family did for them or how challenging that parent to find a better way to connect with their child may have positively changed that relationship, but that is OK. Because we don't do it for the payoff, the money or the prestige. We do it out of the compassion we all have inside of us.



"The therapist we were referred to has been a great fit and it is such a weight lifted off my shoulders knowing my child has someone to talk to. I appreciate everyone's help that my grandchildren and I received. I feel really blessed to have met everyone. Thank you all so much."



Child & Family Services

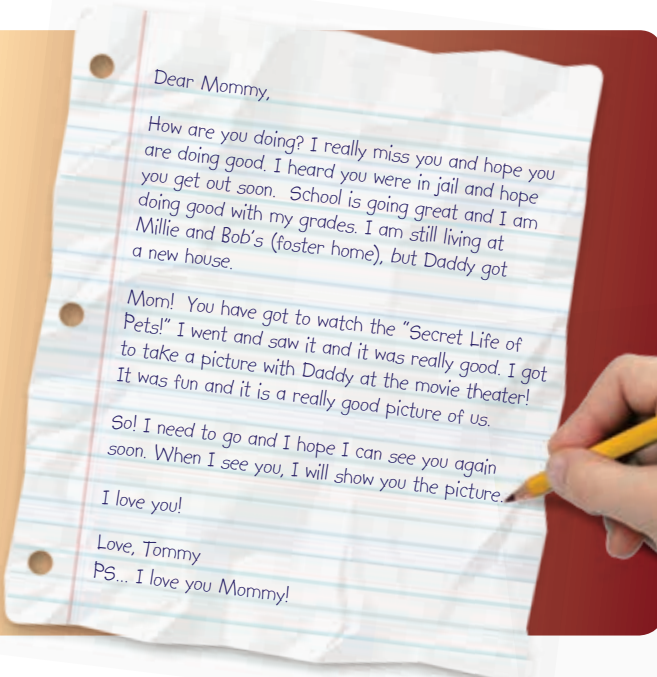
Child & Family Services is a broad-based family and individual counseling program serving child and adult victims of violence with proven interventions. Without proper assistance, children who experience

abuse are more likely to commit crimes, abuse alcohol and drugs, and suffer from depression. Children may suffer lifelong effects without treatment.

John Taylor, director of our Indiana based Child & Family Services program, is working with an eight-year-old child whose young life has sadly been filled with incredible pain and heartache.

The boy has been in foster care for at least two years, and his mother was locked up for the third time for drug use and abuse. The boy's older brother sexually abused him, and he has been neglected throughout his childhood. His father has had issues, too, but is working to get his life back together, with the hope that he and his young son can live together again as a family.

Following is a letter John helped the boy to write, a letter that John says, "almost brought me to tears."



HANDS

HANDS provides voluntary visitation for new and expectant parents that begins during pregnancy or shortly after the child's birth and lasts until the baby is

age two. Our services help foster healthy pregnancy and births, stable child growth and development, safe homes and self-sufficient families.

Winter was 23 when her first child was born. An immigrant from Ethiopia, along with her husband. Neither of them had a support system, job or transportation and they didn't have a strong sense of English as a language.

Neither had any experience with or knowledge of how to care for a baby. They were stressed, confused, frightened and the baby's future looked bleak.

Through HANDS, Family & Children's Place staff provided the couple tools, training and information to help them learn to care for their baby, how to play and engage the baby to stimulate growth and development and how to manage the stress of being new parents in a new land.

Today, the father has a job and they have transportation. Winter earned her high school diploma through Job Corps and is job training. The baby is healthy, on target developmentally and learning to not only talk, but to speak three languages.

Family Stabilization Program

Family Stabilization Program provides assistance for families and individuals at high risk of homelessness. We help families develop their own

plan to become stable, self-sufficient and remain in safe housing as well as providing crisis intervention.

Amanda Carson was referred to the Homeless Prevention Pilot project by the Kentucky Correctional Institute for Women (KCIW). Incarcerated for a drug charge, she lost everything when she went to prison.

Jessica Rogers, a Family Stabilization Program case manager for Family & Children's Place, started meeting with Carson while she was at KCIW to help her set goals for her release.

Carson was released to the Successful Living Transitional Housing Program, where she lived for a few weeks before she left the program following a conflict with her roommate. Carson spent a few days with friends, but was forced to sleep in the open under a bridge until Rogers could connect her with the Rapid Rehousing program.

Carson is safely and stably housed in her own apartment and is working in food service at a local hospital, and hopes to reunite with her teenage daughter next month.



"Everything I need, they have given me. This is a blessing from God."

— A Family Stabilization Program client

Family & School Services

Family & School Services are structured out of school programs that improve academic success and parent engagement. We emphasize character

building, learning, social competencies, and the building of a core support team between student, parent and school.

Alina came to Family and Children's Place for school-based therapeutic services after getting into trouble for attention issues in school. During treatment, she revealed that her father had sexually abused her, so counselors contacted the Department of Child Services.

The following two years, Alina lived in three different foster homes and with one relative, which ended unsuccessfully. Through therapy, she processed the trauma from her abuse, as well as adjusted to the many transitions in her life. She responded well to tailored trauma-informed treatments and this year her foster parents adopted her. Through the happy, healthy relationship with her adoptive family, she has more self-esteem, less anxiety and she has a sense of stability and peace that is helping her further heal.





SEE YOUR IMPACT...

This is Alex.

He loves dinosaurs and is good at solving puzzles.

Alex lives with a foster family. Alex has three natural siblings, but each live in separate settings—one in a foster home, another in family placement with grandparents, the third in a treatment facility relating to inappropriate sexual behavior with Alex and his other siblings.

In his young life, Alex has suffered sexual abuse and neglect and witnessed domestic violence. He is working with counselors and therapists at Family & Children's Place who are helping him work through his trauma.

He loves his foster parents, has fun with his foster siblings and gets to visit—in a supervised setting—his biological parents weekly.

He understands he's survived issues no child should endure, but he knows he'll be just fine with the help of Family & Children's Place.



Therapist 'blown away' by CLIENT'S SELF-REALIZATION, STRENGTH

Recently, Liz Goldy, a Licensed Clinical Social Worker in the agency's New Albany, Ind., office was meeting with one of her clients who has worked hard on her trauma narrative – the process of talking about a traumatic experience that helps the abuse victim organize memories and feelings and is a significant step in the trauma recovery process.

"She has experienced some of the most horrific trauma I've heard," said Goldy. "Today, after she worked some more on her trauma narrative, she said she won't forget the sexual abuse she experienced, but that the sexual abuse doesn't upset her anymore and that now she's OK talking about it.

"I was kind of blown away by her realizing and saying this, because as therapists, this is exactly what we want for our clients. We want them to process the trauma, not forget about it (because they can never really forget it, they can only try to repress it and it will come out in maladaptive ways), and be able to integrate their trauma in a healthy way so that it no longer causes them distress.

"I am so proud of my client for working so hard to heal. After lots and lots of little wins and several setbacks, this is a huge win for her!"



The Kosair Charities Child Advocacy Center

The Kosair Charities Child Advocacy Center is a best in class facility dedicated to the intervention and treatment of child sexual abuse. The KCCAC brings together the expertise of forensic interviewers, family advocates and therapists from our staff,

police, physicians, Child Protective Services and the Commonwealth's Attorney office. Forensic medical exams, specialized interviews and mental health assessments help ensure families receive needed services.



FROM THE STAFF

In life, I think we all try to choose a career that will feed us emotionally and physically. I have found working at Family & Children's place to be that career. As an administrative assistant for the agency, I often have the first and last contact with the children and families enduring trauma in their lives.

I consider it a gift to be able to lend a smile, or to be the support for therapists' who have had a long day. Most every day provides success stories, as I watch families in distress begin to relax, share a hopeful thought and state the change they see in themselves or their children.

One story comes to mind, a family broken by grief. I watched a young child run to (his/her) mother, and say, "Guess what? I shared my feelings today, and now I don't feel afraid anymore. I can do this! I am strong, I know because Miss Blanchard (not her real name) told me so."

Seeing the shining tears in the mother's eyes and the hope of a new beginning, it is the little breakthrough that welcomes the big.

I get to watch the gentle care our therapists' provide and give every day. They each give their all to each and every child and family, as if it were their first appointment of the day.

That is the brightest gift of all – sharing, caring for each other, for in the end, that is all that matters.

So is this a great career? You betcha!

PAL Coalition

PAL Coalition is a Drug Free Communities Program representing the Park Hill, Algonquin and Old Louisville neighborhoods in Louisville. The program focuses on protective factors that promote resiliency and enhance a young person's ability to

resist risks and make good decisions. Evidence shows these youth and community partners have a profound effect on preventing substance abuse and violence in the lives of children and families.

Staff gives children peace, HOPE THROUGH RECOVERY

Making children feel safe is one of the most important tasks of every therapist who works with and for Family & Children's Place. It's a key part of treating child victims of violence, abuse, neglect and helping them recover, but that moment a child accepts, even welcomes the help and support still inspires us all.

A case occurred recently at our Shively-based Supervised Visitation Center where a mother is working with Family & Children's Place to regain custody of her daughter, Sharon. The child is four and has been going through visits at the center with her mother, under the watchful eyes of an agency therapist. Now, though, Sharon is ready to transition to visits in her mother's home, which will be supervised by another F&CP staffer.

Recognizing the need to establish a relationship and to nurture and build trust for the upcoming visits, the home-based worker, Caroline, met with Sharon to introduce herself and to talk with her about how the visits to and with her mother would work – helping her get comfortable with the transition and in-home visits.

Another agency staffer, Shannon, witnessed the meeting and said of Caroline, "she was amazing with the child. Her level of compassion was truly strong and it was great to see that little girl lose her nervousness just by talking with her."

Caroline met the mother, too, separate from Sharon, and the mom said she was very happy to meet Caroline and very comfortable having her assist with getting herself and her daughter's life "back on track."

"I had a wonderful time monitoring this family and thought everyone should know about a family's positive story from visitation and home base workers," said Shannon.

Helping protect and heal children and families. It's not just our mission; it's the agency's DNA.

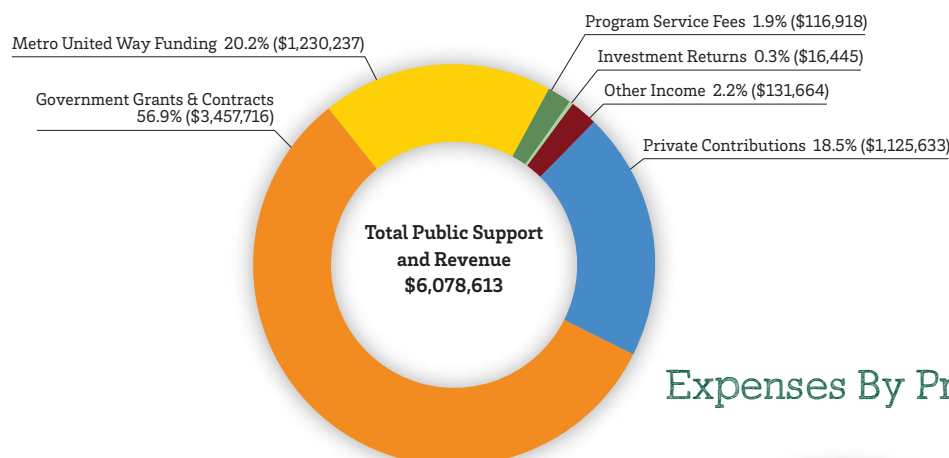


Financials, Stats & Metrics

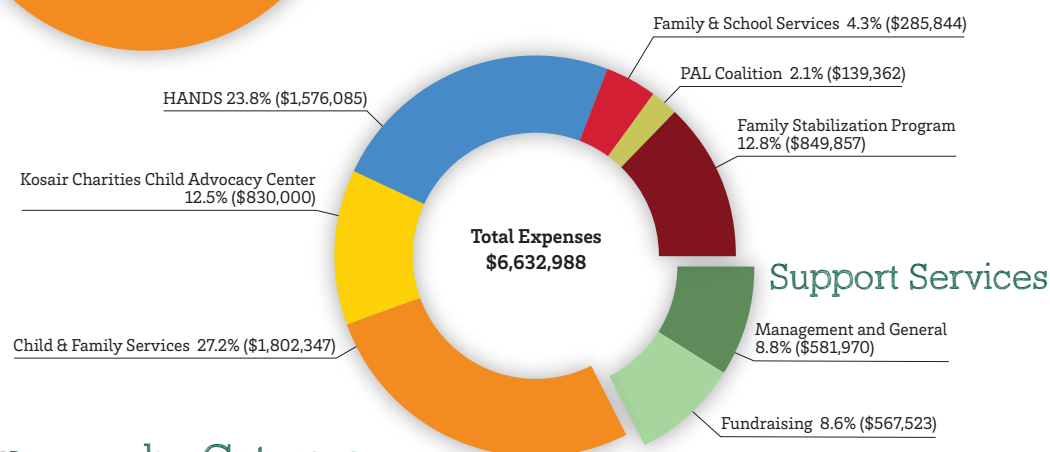
Statement of Revenues and Expenses

Fiscal Year Ended June 30, 2016

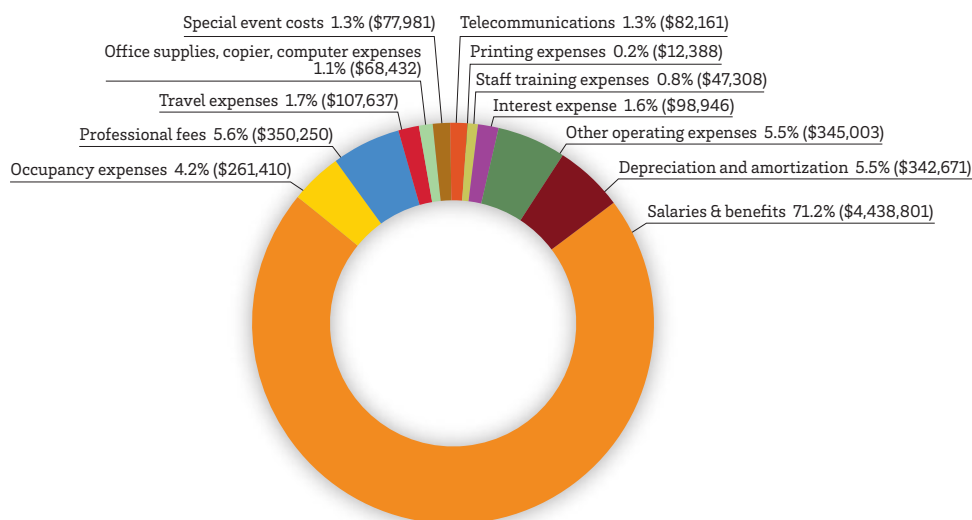
Public Support and Revenue



Expenses By Program



Expenses by Category



Family & Children's Place is proud of its financial integrity and its commitment to ensure donors' generosity is channeled directly to help children and families that have been harmed by violence, abuse and neglect.



Stats

Total individuals helped	6,282	Number of volunteers	323
Total service hours	38,090	Volunteer hours given	4,600 worth \$109,252

Metrics

CHILD ADVOCACY CENTERS

1,913 children and family members helped

Completed 1,037 forensic interviews and 99 medical examinations

94 percent of clients perceive CAC as safe, 99 percent perceive as friendly

	African American	Caucasian	Hispanic	Boys	Girls	Average Age
Kentucky CAC	23%	64%	6%	27%	73%	11
Indiana CAC	11%	81%	5%	30%	70%	11

CHILD AND FAMILY SERVICES

11,613 service hours

Served 792 families comprising 1,852 individuals

	Improved functioning	Progress toward goals
Family Counseling & Child Welfare	93%	87%
Family Treatment	90%	91%

	African American	Caucasian	Hispanic	Men	Women	Average Age
Overall Demographics	28%	62%	4%	22%	78%	35

FAMILY STABILIZATION PROGRAM

8,338 service hours

Served 292 households comprising 338 individuals

94 percent of clients are tracking income/expenses

46 percent of clients know and understand their credit score

97 percent of clients know their assets/liabilities

100 percent of clients have a cost of living plan

23 percent of clients have improved their credit score

51 percent of clients have reduced debt/expenses

FAMILY STABILIZATION PROGRAM (Continued)

	African American	Caucasian	Hispanic	Men	Women	Average Age	Mean Income	Income Below \$15,000	Zero Income
Demographics	65%	33%	1%	39%	61%	41	\$4,906	82%	47%

HANDS

11,156 service hours

Served **770** families comprising **1,636** individuals

97 percent of families are current on immunizations

96 percent of families show no evidence of abuse, neglect

96 percent of children are achieving developmental milestones

89 percent of babies are born with healthy birthweight

	African American	Caucasian	Hispanic	Asian	Men	Women	Average Age	Mean Income
Demographics	44%	30%	16%	4%	2%	98%	26	\$18,945

FAMILY & SCHOOL SERVICES

1,537 service hours

34 families served comprising **115** individuals

86 percent of students and families engaged in activity based programming

83 percent of students built competencies and life skills

77 percent of students improved scores in math, reading

67 percent of students reading below grade level

	African American	Caucasian	Boys	Girls
Demographics	72%	26%	42%	58%

PAL COALITION

250 service hours

Served **428** individuals

Provided **11** Mental Health First Aid community trainings, **two** aimed at youth, with **252** people trained

Provided **five** Youth Worker Methods trainings

Provided community impact through the Mayor's Work Group on Substance Abuse

Board of Directors



Family & Children's Place is governed by a volunteer Board of Directors comprising business, healthcare, educational and community leaders throughout Louisville and Southern Indiana, who lend their expertise to the agency's business and development operations.

CHAIR

Steve Gutermuth

Managing Director, Green Square Capital

VICE CHAIR

Tim Huval

SVP, Chief Human Resources Officer, Humana

SECRETARY-TREASURER

Will Thompson

Director, Transfer Pricing, Brown-Forman

Shellie Benovitz

Fred Cowan

*Former Kentucky Attorney General, Retired
Jefferson County Circuit Court Judge*

Steve Day

*Vice President, Chief Marketing Officer,
Delta Dental Kentucky*

Tony Disser

SVP, Kindred Healthcare

Mary Eaves

Partner, Bingham Greenebaum Doll LLC

Rob Edwards

Chief External Affairs Officer, UK HealthCare

Jamey Elliott

Head of School, Summit Academy

Chris Fears, CPA

Bridgeman Foods

Jason Groneck

GBBN Architects

Rosalie Guthrie

Attorney

John Hamilton

Partner, Alliance Cost Containment

Doug Haynes

Attorney, Fernandez & Haynes PLLC

Greg Hoover

CEO, A. Arnold World Class Relocation

Harriet Lair

VP, Public Funds, Fifth Third Bank

Dr. Erica Lemberger

Jefferson County Public Schools

Michael Masick

*Director, Strategy and Corporate
Development, Brown-Forman*

Bill Meyer III

Managing Partner, Strothman & Co.

Patrick Northam

Attorney, Frost Brown Todd LLC

Jamie G. Paradis

James Poullard

Division Vice President, Pharmacy Lab

Audra Rankin

*Assistant Professor, Pediatric Nurse
Practitioner, University of Louisville School
of Nursing*

Charles Robello

Wells Fargo

Tony Schwallie

Republic Bank

Terrence Spence

*Senior Director, Human Resources, Louisville
Water Co.*

Sherry Steinbock

Licensed Marriage and Family Therapist

John Sweeney

*Managing Director, Hilliard Lyons Investment
Banking*

Gary Thompson

President/CEO, Imperium Health Management

Martin Walters

Private Wealth Advisor, Ameriprise

Family & Children's Place friends,

I am very excited and proud to be chair of the Board of Directors for Family and Children's Place and to have the chance to observe first-hand the great work our dedicated staff does every day. To see the help and impact we make in the lives of the countless families we are able to help and serve in a very delicate time in the life of their family.

We had an exciting year in 2015/2016 where we faced some challenging issues, but I am proud to report that our incredible staff and dedicated Board of Directors met the challenge.

We offer an array of services for families Louisville and Southern Indiana, and are always looking for ways to improve the services we offer and the way we deliver them. I experienced first-hand our Collaborative Learning After School Program at Meyzeek Middle School, which teaches young middle school students how to work together and respect each other.

The teamwork I observed the afternoon I spent there was touching. The students I interacted with all wanted to become better students and were willing to push each other to be better as well. The students all wanted to attend college, regardless of their circumstances and they realized how important education was in attaining their goals.

Your continued support in our mission provides Family & Children's Place a strong foundation for growth and as an advocate to protect children. We need everyone's help so that one day we can end child abuse.

— Steve Gutermuth
Board Chair



Every Child Would Benefit from Out-of-School Program

Family & Children's Place board member Doug Haynes recently visited Meyzeek Middle School for a visit with the agency's Collaborative Learning After School Program (CLASP), managed by the Family & School Services team.

"I was so impressed and so moved," said Haynes, a family law attorney who also holds a master's in social work. "The kids there had so much energy and enthusiasm, and the staff was amazing, working with the students to help them advance in their grades, social skills and life. I walked away with so much emotion.

"I want every child, every student, even those not in our program, to have the experience those student are having. All would benefit."

At Meyzeek, 97 percent of enrolled students qualify for free or reduced lunches and 46 percent of families live at or below the poverty level. Additionally, the neighborhoods, which include Smoketown and Shelby Park, have higher crime, unemployment and high school dropout rates than the rest of Jefferson County.

Haynes also shared that he was so grateful there are people who can do work such as this day to day. "I couldn't do it," he said, "so I am thankful there are those who can, and that they work for us."

— Board Member Doug Haynes



Connecting People to Family & Children's Place

During a recent tour of Family & Children's Place offices in Kentucky and Indiana, board member Gary Thompson noted that people focus so intently on the mission and work of the agency's child advocacy centers – which specialize in serving child victims of sexual abuse – that they often overlook other important work, such as programs that help students and young people, homeless families, supervise visitations and children witness to or affected by domestic violence.

"We need to do a better job of connecting people to everything Family & Children's Place does, to everyone we help," he said, following a recent visit to Meyzeek Middle School to visit with students in the Collaborative Learning After School Program (CLASP), managed by the agency's Family & School Services (FSS) team.

Thompson said he came away moved by the students and by how impactful the middle school-based program was.

"These are at-risk kids," he said, "but I was so moved by how respectful they were – to us as guests and to one another. I was touched by how engaged they were, how participatory in their own progress."

Thompson said he was most moved by the sense of pride and purpose the students had. "These students acted like they were under the impression that they had applied for or been accepted into this program," though the truth was that most were referred to CLASP by teachers or administrators.

"They (the students) didn't see themselves at risk, or troubled or challenged. They approached everything with resolve, determined to succeed. And that's just the FSS team and doesn't consider or count the impact of our other programs. All make important differences in the lives of children and families and the quality of our communities every day," he said.

On his visit to the Indiana offices, Thompson said he was moved by the passion, compassion and competence of the staff. "There's a special place in Heaven for the teams at Family & Children's Place," he said. "I couldn't do what they do, so thank God there are people who do."

— Board Member Gary Thompson



2016 Events



Rally to End Child Abuse – Child Abuse Prevention Month

In April, Family & Children's Place hosted the annual **Rally Against Child Abuse at the Big Four Bridge Lawn** to commemorate Child Abuse Prevention Month. Participants included Kentucky Gov. Matt Bevin and First Lady Glenna Bevin, Kentucky Atty. Gen. Andy Beshear and Indiana Atty. Gen. Greg Zoeller, as well as Kosair Charities and other members of the Face It Movement supporting the call to end Child

Abuse. Speakers included the governor and attorneys general, Pam Darnall, F&CP president and CEO; Terry Brooks, executive director of Kentucky Youth Advocates; Louisville Metro Police Chief Steve Conrad; Dr. Melissa Currie, medical director and chief at Kosair Charities Division of Pediatric Forensic Medicine; and Jerry Ward, Kosair Charities board chair.

29th Annual CAPER

The 29th annual CAPER event followed the University of Louisville men's basketball game against Boston College. More than 500 guests sampled food from local restaurants, played some games, took home great auction items, and met former Cardinal Coach and local luminary Denny Crum, along with meeting and getting autographs from Cardinal basketball players.





Building Brighter Futures Breakfasts

Indiana

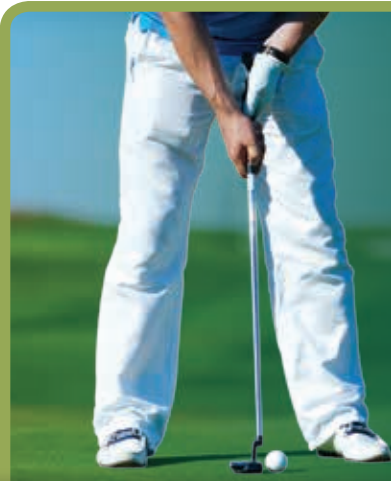
In March, nearly 200 people attended the second **Building Brighter Futures Breakfast in Southern Indiana**, held at the Grand Theater in New Albany.

Guests heard from Keith Henderson, Floyd County, Ind., prosecutor, and Greg Zoeller, Indiana's attorney general.

Kentucky

Nearly 500 people attended the annual **Building Brighter Futures Breakfast at the Seelbach Hotel** in April. Guests heard from Samantha Robertson, a survivor of abuse who received help from Family & Children's Place as a child, as well as Kentucky Atty. Gen. Andy Beshear. The agency also awarded gold medals of appreciation, including the Mary Beth

Doheny Volunteer Award to Nick Hettich, Joe Clay and Chris Bailey, founders of Louisville Mashed, a bourbon-themed event that attracted hundreds to learn more about the agency. Also presented was the Partnership Award, which went to Charter Communications, a 20-year partner that supported the agency's April pinwheels campaign, part of Child Abuse Prevention Month.



Golf Scramble

In June, Family & Children's Place held its 13th annual golf scramble at the beautiful Persimmon Ridge Golf Club. Nearly 200 participants hit the links to support agency programs while enjoying food and prizes throughout the day. By day's end, participants pledged thousands of dollars to support the agency's work.

Donor Family

Mohammed-Suffy Abbas	Shellie Benovitz	Frank Chuppe	Howard and Liz Dohrman	Elizabeth Fries	Paula and Frank Harshaw
Rashaad Abdur-Rahman	Adam Bentley	Richard Cirre	Jaret Douglas	Todd Frossard	Mary Hartlage
Thomas Aberli	Erin Berkley	Jennifer Clark	Mark Downer	Tracey Fu	Dale and Edmona Hartley
Sarah Abrams	Edith Bingham	Jyl Clark	Joy Dozier	G. Harlan Furbush	Larry and Patti Hartog
Belicia Adams	Angela Black	Maurice Clark	Susan and Steve Drake	Johnny Fussell	Barbara Hartung
Brenton Adams and Donna	Don and Jeanne Blackburn	Adam Clay	Michael Drury III	Tim Garcia	Stuart Haseker
Edelen	Kevin Blair	Ashley Clay	Michelle DuCharme	Gene Gardner	Peter Hasselbacher
Juan Emmanuel Afable	Rachael Bledsoe	Darnell and Angelyn Clay	Tiajuana and Donald Dunbar	Evan Garmon	Ryan Hasty
Donna Ahlrich	Carolyn Blythe	Joe Clay	Anthony and Elaine Duncan	Gordon and Joyce Garner	Douglas Haynes
William and Frances Alden, Jr.	Dale and Chenault Boden	Tamara Clay	John and Linda Duncan	Megan Garrison	Greg Haynes
Kelly Alexander	Monica Boes	Sherry Cockrell and	Bruce Durall, Jr.	Sean Gatewood	Sara Haynes
Krisenda Allen	Paula and Thomas Bohnert	Houston Blair	David and Sarah Durand	Stephen Gault	Samuel and Elizabeth Hazard
Dena Alli	Ruth Anne Boklage	Randy Coe	Katherine Dyke	Mary Gaynor	Martina Hazel
Joshua Alstott	Christina Bolton	DeShawn Collett	Mathew Dymowski	Annette and Harry Geller	Joe and Sissy Helm
Bill and Carlyn Altman	Holly Boston	Sharetha Collins	Andy Dytrych	Alex Gerassimides and Greg	JT and Natalie Henderson
Henry and Barbara Altman, Jr.	David Boucher	Stacey Collins	Mary and James Eaves	Fischer	Marcella Henderson
Jim Anderson	Margaret Brandt and Albert	Bart and Kelly Colomb	Eva Edinger	Jeremy Gernert	Dominique and Robert Hendren
Joseph Anderson, II	Lyons	Shannon Conder	M.R. Edn	Ruby Gibson	Kelly Herl
Matt Anderson	Gregory Braun	Chief Steven Conrad	Benjamin Eduful	James and Grace Giesel	Tobi Hertweck
Thomas and Cynthia Andres	David and Elizabeth Brennan	James Conner	Robert Edwards	Donald and Carol Giffen	Terri Hester
Anonymous	Cecil Brewer	Chenault Conway	William and Colleen Ehrig	Kathryn Giles	Nick Hettich
Sarah Antle	Ulysses and Doris	Erica Cooley	Dustin Elder	Stephen Gionfriddo	Frances Heyburn
Billy Todd Applegate	Bridgeman, Jr.	Elizabeth Cooper	Shelby Ellis	Michelle Giralico	Corey Hill
Diane Applegate	Terri Briney	Paul and Michelle Costel	Jane and Bert Emke	Charlotte and Joel Gittelston	Marvin Hill
Gabrielle Archer	Brian Brinkworth	Frederic and Linda Cowan	Harriet Engelhard	Alan and Janice Glaubinger	Deanna Hipwell
Andres Arias	Rebekah Brockman	Lafayette Cowden IV	Chyyanne English	Deborah Glidewell	Kevin Hisel
Travis Arkon	Judith Brohm	Megan Craig	John English	Gerard and Zmira Gold	Michael Hobbs
Brandon and Nina Armstrong	Ashley Brooks	Ed Creel	Karen English	Eddie and Barbara Goldberg	Angela Holbrook
James Armstrong	Barbara Brooks	Curtis Critchfield	Donald and Vicki Ensor	Lawrence and Carole Goldberg	Jayne Hollander
Jenna Artis	Sandra Brown	John and Betty Cronin	Sarah and William Ernst	Maxine and Murrel Goldberg	Clifton Holman
Dan and Judy Askins	Alan Brown	Paige Crouch	Cynde Estep	Linda and Stuart Goldberg	Paul Hood
Jeanette Asseff	Elizabeth Brown	Sheila Crowder	Angie Evans	Clifton Goode	Alexandra Hoover
Kelly Atwood	H. Hewett and Sue Brown	Jo Cruz	James Evans	Craig Goode	Greg Hoover
Donna Autrey	Mac Brown	Roger and Kathie Cude	Liz Everman	Robert and Kathy Goodin	Leigh Hopper
Kenithia Avery	Ann and William Brumleve	Brian Cullinan	Jay Eversole	Wardell Goodman	Jill Horn
Robert and Judith Ayotte	Heather Bruner	Patricia Cummings	Jamie Ezell	Stacy Gordon	Shanika Horton
Kerry Babb-Armour	Teia Bryant	John and Jeanne Cummins	Sally Fangman	Danielle Graff	Albert and Barbara Horton
Ashley Bailey	Charles Buddeke	Troy Cunningham	Filomena Farley	Ronald Graham	Katelyn Hott
Chris Bailey	Patrick Bunzel	Nick Curcio	Debbie Farrell	Charles and Ann Grannan	Michael and Stacy Houlihan
Dan Bailey	John and Susanna Burger	Melissa and William Currie	Jenny Faught	Craig and Merrell Grant	Katharine Hoy
Allisa Baker	Justin Burke	Thomas Curtin	Michael Faurest	Merriann Grant	Krista and David Hubble
Stephanie Baker	Stephanie Burke	Gordon and Lori Dabney, Jr.	Kathy and Mike Fautz	James Gravitt	Anthony Huey
Colleen Balderson	Steve Burks	Patrick Daily	Mary and Albert Fautz	Brandi Gray	Robert and Jennifer Hughes
Laurie Balmer	Briston Burns	Veneda Dalton	Chris Fears	Ashlee Gray-Johnson	Philip and Robin Hughes
Sara Banks	Garry and Donna Burry	Martin DaPore	Jane Feist	and Eric Johnson	Scott Shuler and Melody
Brian Barakauskas	Ryan Burt	Pamela and Danny Darnall	Chasta Feller	Austin Green	Hulse-Shuler
Erin Barker	Alyssa Busch	Aaron Davis	Bill Fender	Ted Green	Mary Rose Hulsey
John Barksdale	Katheryn and Michael Bush	Allison Davis	Michelle Fenske	Kevin Greer	Ellee Humphrey
Michael Barnard	Jackie Butts	John and Ann Davis	Liz Ferguson	Anthony Griffith	Ray and Catherine Hundley
Rachel Barner	Eric Call	Linda Davis	Stephen Fetterman	Paula Grimes	Sarah Hunter
Deborah Barnett	Jeffrey and Susan Callen	Tyla Davis	Lois Fineman	J. David and Marlene Grissom	Stephanie Huntley
Suzanne Baron-Hess	Peggy Campbell	Steve and Karen Day	Carl and Roberta Fischer, Jr.	Jason Gronneck	William Huston, III
Angela Barrett	Christopher Carden	William and Patricia	Rachel Flanary	Justin Grooms	Tim and Brenda Huval
Rania Basha	Mary Ann Carden	Deatrick	Janet Fleck	James Grunow	Anne Ickenroth
Kalisha Bass	Candise Cardwell	Douglas and Sharon Deatz	Dee Flippins	Damian Guerra	Megan Imel
Stephanie and Michael	Edward Carle	Becky Decamp	Margaret Flowers	Melinda Gullett	Keri Ingram
Bateman	Charles Carosella	Daniel Decker	Robert Flowers	Steve and Elizabeth Gutermuth	Melanie Inman
Lauren Bauer	David Carr	Tony DeMurray	Kandice Ford	Joanne Gutermuth Buese	Kevin Inwright
Sara Baumgardner	Brittany Dennis	Holly Fortner	Holly Fortner	Newman and Ellen Guthrie	Edward and Grey Isaacs
Lauren Bays	William and Sandra Carroll	Timmy Fournier	Timmy Fournier	John and Deandra Haertzen	Sanchez Jackson
Margaret Beale	Tarrah Carter	Lyndsay Fowler	Lyndsay Fowler	Erica Hall	Jerry and Kathryn Jacobi
Jessica Beal-Korhonen	William Carter	Daniel and Elizabeth Fox	Daniel and Elizabeth Fox	Martha and Thomas Hall	Ms. Brenda Jacobs
James and Sheila Beaven	Regina Cartwright	Ricardo Fox	Ricardo Fox	Marion Halliday	Jon Jacobson
Brent Beckmann	Tamella and Charles Cassis	Chris Francke	Chris Francke	Sherry Hamilton	Patricia Jaegers
Edward and Anne Beeler	Donna Castillo	Paul and Mary Alice Franz	Paul and Mary Alice Franz	Stephanie Hamilton	Kenneth Jaegers, Sr.
Thomas Bell	Charles and Katherine	Cortrell Frazier	Cortrell Frazier	Todd and Kara Hamilton	Danny James
Lisa Bellafato	Castner, Jr.	Danessa Frazier	Danessa Frazier	John and Sue Hamilton	Haley James
Michael Bellissimo	Kevin and Cynthia Cecil	Erin and James Frazier	Erin and James Frazier	Will Hammel	Lindsey Jeavons
Robert and Leslie Bender, Jr.	Tina Cecil	Anthony and Nancy Disser	Anthony and Nancy Disser	June Hampe	Debbi Jenkins
Bryan Benjamin	Edgar Cerda Espinosa	Jean Distler	Jean Distler	Gary and Gail Hanke	Jennifer Jett
Samantha Bennett	Carter Chapman	Patrick and Laurel Doheny	Patrick and Laurel Doheny	Jessica Hanley	Edward Jewell
Tameka Bennett	Stephen Charkoudian	Frank Doheny, Jr.	Frank Doheny, Jr.	Jolisa Harlan-Miller	Modou Jobe
Peter and Sonita Bennitt	Henry and Sally Chisholm	Edward Doheny	Kimberly Friend	Don Harris	DaRon Johnson

Robert Johnson	Shawn Long	Megan Murphy	Kenneth and Marianne	Lacey Solis	Aaron Voong
Valorie Johnson	Natalie Lopez	Michael Murphy	Reutlinger, Jr.	Yasmeen Sowell	Charlotte Walford
Annice Johnston	Amy Lowen	Ian Mutchnick	Gil Reyes	Keith and Susan Spayd	Laura Walker
Cherie Jones	Ray and Meredith Lucas	William Myers	Meaghan Reynolds	Richard Spayd	Leah Walker
David and Betty Jones, Sr.	Italia Ludlow	Logan Nantz	Wesley Reynolds	Susan Speed	Tammy and Vance Walker
Jeanna Jones	Rebecca Ludlow	Hiahwahnah Neal, III	Dale Richardson, Jr.	Terrence Spence	Louise and Thomas Wall
Laura and Jeffrey Jones	David Luker	Jan and John Nehil	Raechel Rickard	Kate Spencer	Chris Walter
Joe and Barbara Jones	Katherine Lukins	Christopher Nelson	Brittany Riggs	Rudy Spencer	Martin and Stephanie Walters
Kimberly Jordan	Elizabeth Lyles	Matthew Nethery	Chad and Bess Riney	George and Nancy Stablein	Brandon Warren
Allie Jorrich	Adam Lyons	Dayna Neumann	Richard and Janet Rink	Morris Stanton and Ann Marie Lombardi	Bridget Wathen
Mark Jorrich	M'Lynn Mabe	Kathy Neuner	Pam Ritchie	Kayla Stargel	James and Rose Wathen
Micah and Fiona Jorrich	Mark and Lisel Macenka	Jon Newton	Rebecca Rivera	Judith Steilberg	Augustus Watts, Jr.
Jonathan Kamer	Cindy and Robert Maddox	Diane Nguyen	Charles and Marnie Robello	Nicholas Stein	Greg Watts
Eura Kang	Heidi Margulis	Cecilia Nichols	Jeremy Roberts	Elizabeth Steinbock	Leslie Watts
Michael and Eva Kapfhammer	Beverley Marmion	John and Sallie Niehoff	Julie Roberts	Sherry and Allen Steinbock	Angela Webster
Ken and Marguerite Kapp	Deena Marquis	Sarah and Greg Nielsen	Shamon Roberts	Bill and Alison Stemler	Scott Webster
Daniel and Milena Karelitz	Paul Marro	Hank Noble	Hank Robinson	Robert and Mary Ann Stenger	John and Lynda Weeks
Kevin and Amy Kastensmidt	Edith Martel	Chris Noel	Reylene Robinson	Caitlyn Stensrud	Steve Wehrle
Ann Marie Kelly	Christian Martin	Patrick and Margie Northam	William and Mary Jane Roby	Martha Stephenson	Katie Weihl
Fred Kelly	Donald and Karen Martin, Jr.	Lauren O'Connor	Dorothy Roehrig	Tracy Steward	Ellen Weis
W. Brian Kenney	Lindsay Martin	Tiffany Oates	Jane and Joe Roehrig	Billy Stewart	Joanne and Edwin Weis
Mary Beth and George Kerekes	Sarah Martin	Kim Oatman	Adam and Lauren Rogers	Gary and Cheryl Stewart	Sharon Weiss
Steve Kerrick	Susan Martin	Linda and Bill O'Bryan	Matt and Leslie Rogers	Kate Stewart	Gary and Toni Weitkamp
Marta Kiesling	Jerry and Martha Martin	James Ogburn	Peter Ronald and Ann Hayes	Charles and Rebecca Stigler	Debra Wells
Ken and Margaret Kinberger	Kimberly Mathews	Jamie Ogles	Jeffrey Rose	Mary Stites	Edith Wells
Kelly King	Kelly and John Matlock	Thomas O'Hearn	Aaron Rosenberg	Lynda Stivers	Vanessa Wesley
John King	Annette and Gerard Mattingly	Dawn O'Keefe	Eric Rosenberger	Donna Stone	Julie Wheeler
James and Mary Jean Kinsman	Courtney Maxedon	Terri O'Leary	Nicholas Rosenberger	John and Lee Stough, Jr.	Anessa White
Samantha Kiper	Jeffrey McCaffrey	Craig Oliver	Marc Rothman	Dave Strange, Jr.	Michelle White
Robert and Genina Kleehamer	Darin McCall	Judith Olliges	Kim Royles	Terry and Sarah Strange	Nancy White
Paul and Tracy Klein	John and Sara McCall	Zachary Olson	Jennifer Rubenstein	William and Lindy Street	David Whiteman
Carol Kloenne	Murray McCandless	Karla and Mark Overdyk	John Rucker	Sandra Streicher	Cheryl Whitfield
Jonathan Klunk	Mary McClain	Erin Owen	Rosella Rudd	James and Diane Stuckert	Darlene Whitney
Louis and Nicole Knupp	Ellen McCoskey	Garth Padgett	George Rue, III	Michael Sturgeon	Laverne Wilbon
Robert Koehler and Joan Mayhugh	William and Pamela McCreary, Jr.	Martin Padgett	James Russell	Kimberly Sturgill	Amos Wilkins
Christine Koenig	Randy and Joanne McDevitt	Therese and Carlton Paige	Jim Russo	Marty Sumler	Lynn Wilkinson
Benjamin Kolb	Taylor McDowell	Akure Paradis	Donna Russow and Terry Weigel	James Summers	Larry Willard
Susan Koontz	Matt and Marie McGaha	Jamie and Joseph Paradis	Michael Sadofsky	Shequoyea Swain	Heather Williams
Sarah and Erik Korte	Andy McKay	Vreja Parker	Jose Sanchez	John and Ann Sweeney	James Williams
Angela Koshewa	Robert McKiernan	James and Shirley Parker	Joan Sanders	Deryl Sweeney	Lawrence Williams
Kathleen Bean and Bob Kotheimer	Elizabeth McKyne	Diane Partridge	Barbara Sandford	Todd and Anne Tallon	Sophia Williams
Kurt Kraft	Rachel McMahan	Robert Patrick	Rory Satkoski	Fanta Taylor	Wayne Wilson
Timothy and Teresa Kraus	William McNabb	Kyle and Vicki Patton	Victor Satterly, III	John Taylor	Susan Winegarden
Steven Kress	George and Dorothy McNair	Eric Payne	Dawn Savoy Stamford	Larry Thieneman	Louis Winner
Barbara Kritlow	Leslie McNulty	Barbara Payton	Rob Schenkenfelder	Melinda Thieneman	Doug Wittman
Janelle Krueger	Jack and Mandy McQuade	Jill Peden	Philip Schmer	Miyakayla Thomas	Amy Wolf
Forrest Kuhn	Emily and Chris McRae	Peter and Dianna Pepe	Melissa Schremser	Patricia Thomas	Richard and Mary Bert Wolf
James and Joan Kuhns, Sr.	Shannon and Nick McRae	Ernest and Martha Pepples	Sheila Schuster	Romica Thomas	Mark and Robin Wolff
Julianne Kurdila	Barb McTeague	Leigh Perry and Edsel Beale	Tony Schwallie	Margaret and Preston Thomas	Edith Wombwell
Cameron Kurz	Brenda McWaters	Edwin and Kathryn Perry	Bill Seifrit	Mika Thomasson	Frank and Keitt Wood
Harriet Lair and Barry Younk	Michael Meador	Marc Phillips	Susan Seiller	Ben Thompson and Brittany Moxley	Susannah Woodcock and David Tachau
Margaret Lanier	Cortez Meadows	Rodney Pitts	R. James and Della Sennett, Jr.	Gary and Valory Thompson	Charles Woods
Audra Lash	Shawn and Gregory Meiman	Jhon Plunkett	De'Letra Shabazz	William and Jennifer Thompson	Renetta Woods
Susan Lashley	Jeff Melego	Linda Portaro	Michael and Phyllis Shaikun	John Tichenor	Mary Jean and William Woodward
Anthony Lassalle	Taylor Menter	Kathy Potts	Marjorie Shallcross	Edward Tillet	Karen Wooldridge
Jo Lawless	Ronny Meriwether	Tina Powell	Stephen Shamblen	Gwen Tilton	Cathy Worland
Cordell Lawrence	Kevin Meriwether	Lauren Powers	Ellen and Max Shapira	Steven Timberlake	Christine Wozniak
Cody Lawson	Clay Merryman	Bridgette Pregliasco	Linda Shapiro and Robert Taylor	Lindsey Tipton	John Wright
William Leach	Kathy Meyer	Delores and William Pregliasco	April Shaw	Sherrian Tolbert	Michael Wright
John and Terri Leehy, III	William and Becky Meyer	Marcus Presley	Lewis Shaw, Jr.	Tommy Tornado	Troy Wright
Joe Legel	Corey Miceli	Joseph Provencher	Kathleen Sidebottom	Samantha Torusio	Karen Wunderlin
Lewis Legg	Nison Migirov	Rachel Province	Shannon Siders	Martha Townsend	Cheyenne Wyatt
Greg and Kathleen Leichty	Dawn Miley	Laura Raap	Rachel Siebert	William and Sarah Tucker	Afton Yaeger
Leonard and Adele Leight	Amy Miller	Gordon and Nancy Ragan	Tammie Simmons	Michael Tungate	Stephen Yards
Erica Lemberger	Jasmine Miller	Randolph Ramey	John Simms	Mark Turner	John and Cathy Yarmuth
Amy Letke	Jerry and Laura Miller	Gilbert and Mary Ramirez	Luke Simon	McKenzie Turner	Deborah and Richard Yetter
Arnold Levin and Don Powell	Corey Moffett	Roxana Ramon-Bond	Nicholas Simon	Toyia Turner	Joe Yoerg
Margaret Levy	Olivia Molohan	Kathryn Ramsey	Ashunda Singleton	Beverly Tway Wagner and Walter Wagner, Jr.	Aaron Young
Susan Lindle	Doris Mooney	Hunter and Audra Rankin	Elizabeth and Bernard Rapp	Rusty and Joni Skaggs	Antoinette Young
Morgan Lindsey	Benjamin Moore	Laura and Bruce Raque	J. Michael Skelton	Terry and Amanda Tyler	Kasey Young
Amy Linfield	Anne and John Moore	Christopher Reaves	Dallas and Nancy Skiles	Deanna Tzanetos	LaKesha Young
Abby Link	Jennifer Moore	Mary Reed	Andy Smith	Andrew Ulinski	Laura Young
Alan Linker	Angela Morrison	Richard and Rebecca Reed	Brandon Smith	Vince Van Nevel	Roderick Young
Jennifer Liter	John and Barbara Morrow, III	Katlin Reichle	Julia Smith	Russell Vandenbroucke	Marc and Ann Zakem
Terri Lloyd	Donna Morton	Emily Bingham and Stephen Reily	LA Smith	Missy and Paul Varga	Lisa Zaring
Brownye Loeffler	Jesse A. Mudd	Timothy Reinert	Norma Smith	Jennie Vavrousek	Tamara Zavislan
Lashawn Lofton	John and Mary Mulder	Andrew Reithel	Stephanie Smith	James Vester	Kenneth and Shelly Zegart
Kortny Logan	Sean and Susan Muldoon	Carmen Rendon	Robert Smock, Jr.	Luis Villanueva	Shannon Zeitz
	Anne and Duane Murner	Madelene Reno	Mark and Dee Snyder	David Vish	Robert Zik
	Diane Murphy		Susan Snyder	Dave and Jill Vogel	Neil Zinser

Corporate Donors

\$10,000 or more

Delta Dental of Kentucky
Brown-Forman
Yum! Foundation

\$5,000 - \$9,999

A. Arnold World Class Relocation
Algood Foods
Main Source Bank
Kindred Healthcare
Humana Inc.
UK HealthCare

\$2,500 - \$4,999

Fifth Third Bank of Kentucky
Arbonne International
Bales Automotive
Bingham Greenebaum Doll LLP
DMLO
Maxim Healthcare
Northwestern Mutual
Norton Healthcare
Passport Health Plan
Professional Bank Services
Republic Bank
Spring River LLC
Tri-Arrows Aluminum
University of Louisville Pediatrics
WellCare

Other supporters include:

Arbonne International
Bosse Mattingly Constructors
Centra Credit Union
Charter Communications
Clark Memorial Hospital
Cox Allen and Associates Architects
First Harrison Bank
Floyd Memorial Hospital
Hall Construction
Hilliard Lyons
Integrity HR
Kohl's
Liberty Mutual
Morgan Stanley
Mortensen Dental
North Vernon Beverage
PNC Institutional Investments
Stock Yards Bank
Strothman and Co.
Whayne Supply
Your Community Bank
Zoeller Co.

Signature Partner

Kosair Charities

2016 Foundation Gifts

ACBL Charity Foundation
Arbonne Charitable Foundation US
Ar-Hale Family Foundation
Capricorn Foundation Charitable Trust
Charles and Ruth Seligman Family Foundation
Community Foundation of Louisville
Fred B. and Opal S. Woosley Foundation
Glenda and Gordon B. Ford Foundation
Hertzman Foundation
Honorable Order of Kentucky Colonels
Horseshoe Foundation of Floyd County
Humana Foundation
Irvin F. and Alice S. Etscorn Foundation
John S. Rankin Charitable Trust
JP Morgan Chase Foundation
LFMC Foundation
Louisville Bar Foundation, Inc.
Mildred V. Horn Foundation

Mutual of America Foundation
Paul Ogle Foundation, Inc.
Sam Swope Family Foundation, Inc.
Snowy Owl Foundation, Inc.
The Cralle Foundation, Inc.
The Gheens Foundation, Inc.
The Hazel and Walter T. Bales Foundation Inc.
The UPS Foundation
V.V. Cooke Foundation
WHAS Crusade for Children
William E. Barth Foundation

Donor Advised Funds

Cecil N. Brewer
Betty Dabney Brown
H. Hewett and Sue Brown
Walter R. and Christe Coe Fund
Paul and Michelle Costel
Gordon and Lori Dabney
John and Ann Davis
Dona O'Sullivan Fund to Fight Homelessness
Emke Family Fund
Family Heritage Fund
Paul and Mary Alice Franz
George N. and Beverly M. Lane Charitable Endowment
Greg Fischer and Alexandra Gerassimides
James and Grace Giesel
Craig and Merrell Grant
Jonathan Everett Dunbar Fund
The Tim and Brenda Huval Charitable Fund
Ina Brown-Bond Fund
Kurt D. Kraft
Harriet L. Lair
The Bill and Becky Meyer Giving Fund
The Jerry T. and Laura J. Miller Charitable Fund
The Roby Family Giving Fund
Sandford Family Fund
Keith and Susan Spayd
Terry and Amanda Tyler
Louise R. Wall
John C. Wright Family Fund
Dr. Kenneth and Shelly Zegart
Zoeller Company Donor Advised Fund

Sanford Donors

Family & Children's Place lost a dear friend in August 2015 with the passing of Halsey Sandford. Halsey was a husband, father, grandfather, businessman, philanthropist and friend. He was passionate about the mission of Family & Children's Place. Many of his friends honored him with a memorial gift to ensure Halsey's legacy of generosity lives on.



Henry and Barbara Altman
Anderson, Bryant, Lasky & Winslow, PSC
Margaret Beale
Peter and Sonita Bennitt
Dale and Chenault Boden
Elizabeth D. Brown
Charles and Katherine Castner
Stephen Charkoudian
Henry and Sally Chisholm
Community Foundation of Louisville
Chenault McClure Conway
John and Jeanne Cummins
Gordon and Lori Dabney
Douglas and Sharon Deatz
Becky W. Decamp
L.D. Deters, Jr. and Penelope Shaw
Howard and Liz Dohrman
Donald and Vicki Ensor
Carl and Roberta Fischer, Jr.
Daniel and Elizabeth Fox
Elizabeth Fries
James and Grace Giesel
Goodwin Procter LLP
J. David and Marlene Grissom
Joanne Gutermuth Buese
Marion S. Halliday
Paula and Frank Harshaw
Joe and Sissy Helm
Albert and Barbara Horton
Edward and Grey Isaacs
Kenneth R. Jaegers Sr.
Patricia B. Jaegers
Lindsey Jeavons
Joe and Barbara Jones
Daniel and Milena Karelitz
James and Mary Jean Kinsman
Robert Koehler and Joan Mayhugh
Kurt D. Kraft
James and Joan Kuhns
Margaret G. Lanier
Mark and Lisel Macenka
Jerry and Martha Martin
Anne H.T. Moore
John and Barbara Morrow
Peter and Dianna Pepe
Ernest Pepples
Kenneth and Marianne Reutlinger
Marjorie Shallcross
Stephanie Smith
Susan Speed
St. Francis School
George and Nancy Stablein
Robert and Mary Ann Stenger
Mary Clay Stites
John and Lee Stough
Bill and Lindy Street
James and Diane Stuckert
Margaret and Preston Thomas
Beverly Tway Wagner
Scott A. Webster
Gary and Toni Weitkamp
Nancy White
Mark and Robin Wolff
Frank and Keitt Wood
Lisa Zaring

Office Locations

FAMILY SERVICE CENTER

525 Zane Street • Louisville, KY 40203

KOSAIR CHARITIES

CHILD ADVOCACY CENTER

1000 S. 5th Street • Louisville, KY 40203

SOUTHWEST OFFICE

1800 Neville Drive • Louisville, KY 40216

SOUTHERN INDIANA OFFICES

2818 Grant Line Road • New Albany, IN 47150

100 W. Court Avenue • Jeffersonville, IN 47130

First Friday

On the first Friday of each month we invite citizens, community leaders and business professionals to join us on a 60-minute tour of Family & Children's Place to learn about our work with children and families hurt by abuse. The tour, which features a light lunch, includes a visit to our best in class Kosair Charities Child Advocacy Center, which streamlines child abuse investigation and prosecution through child-friendly, trauma-informed practices.

To learn more about or to sign up for an upcoming First Friday, please email **Micah Jorrich** at mjorrich@famchildplace.org.

Request a Speaker

If you would like a speaker from Family & Children's Place, including the Kosair Charities Child Advocacy Center, HANDS, PAL or Child & Family Services, for your organization, agency or club, please email info@famchildplace.org. Please include all information possible, including the group, time and date requested, time allotted for speaker, location, special requests, etc.

Leadership

SENIOR TEAM

Pamela Darnall, *President/CEO*

Liz Ferguson, *Vice President of Government Relations & Strategic Planning*

JT Henderson, *Vice President of Philanthropy*

Joedy Isert, *Vice President of Marketing/ Public Relations*

Jack McQuade, *Vice President of Finance*

Donna Russow, *Vice President of Programs*

DIRECTORS

Jennifer Clark, *Director, Family Stabilization Program*

Jo Cruz, *Director, Family & School Services*

Mary Gulick, *Director, Kentucky Child & Family Services*

Becky League, *Director, Kosair Charities Child Advocacy Director*

Tomy Molloy, *Director, PAL Coalition*

Judi Steilberg, *Director, HANDS*

John Taylor, *Indiana Director, Child & Family Services*

Volunteer Opportunities

Family & Children's Place empowers the unique skills of more than 300 volunteers every year. We have numerous opportunities for you to partner with us to achieve our vision of happy, healthy children and families, freed from abuse. Email lwalker@famchildplace.org for more information.



Family&Children's Place

